

The Outer Edge

E
d
g
e

Newsletter of the Channel Islands PC Users Group

October 2001
Vol. 15, No.4

Whole No. 173
ISSN 1055-4599



Visit our Web page at: www.cipcug.org
e-mail: helen@cipcug.org
OS/2:<http://www.vcnet.com/os2-corner>

The Friendly Computer Club Helping Make Computers Friendly

Attendance at the
September general meeting
Not listed

**WE WELCOME
1 NEW MEMBER**

To Contact CIPCUG

The Outer Edge.....(805) 485-7121
General Information... (805) 647-0943
Mailing Address...P.O.Box 51354, Oxnard, CA
93031-1354

ROOT DIRECTORY

CIPCUG NEWS

BEGINNERS' SIG	13
COMING CIPCUG EVENTS	3
COMMAND.COM	1
EDITOR'S COLUMN	19
EXECUTIVE COMMITTEE	2
F1: YOUR HELP KEY	17
ISP DETAILS (CIPCUG)	18
MEMBERSHIP REPORT	12
PROGRAM: PrimeFilm SCANNER	10
Q&A SESSION	4
TREASURER'S REPORT	19
WEB PAGE NEWS	11

OTHER ITEMS

BITS & BYTES	18
INTERNET CONNECTION SPEED	14
INTUITION & COMPUTERS	16
WINDOWS KEY SHORTCUTS	10

COMMAND.COM

By Andy Toth, President

Jeff Levy will be our guest speaker for October. Visit the CIPCUG Web site for links to his site. For anybody unfamiliar with Jeff, he is the host of a computer-related radio talk show on KFI (640 AM). His presentation should be informative and entertaining. All are welcome

The next topics relate to the class offering from New Horizons Computer Learning Center and the October "Check Up, Tune Up, and Troubleshoot."

By this time, each of you should have received an e-mail describing both these events. Only on rare occasions will a group mailing be done. The \$65 per person course cost, for a group-selected course, is exceptional, and I believe warrants this mailing. I attended a beginning Power Point 2000 course in September. The class was started with the premise that I had basic Windows skills but knew nothing about Power point. It was as if I had one-on-one training during the class. The normal cost is \$245, and at \$65 this is a steal. If you have any interest go to CIPCUG.ORG and sign up. The caveat is that a group of 24 is required for this to happen. I hope by the time this is read a course has been selected. We hope to schedule a course in the late October to late November time frame.

At the October meeting from approximately 8:45 to 10:45 a.m., the "Check Up, Tune Up, and Troubleshoot" will be taking place. The cost will be \$10, which is split between CIPCUG and Ventura County Computers. You will also get a \$10 gift certificate good for service or merchandise. As the e-mail mentions, since there is no Internet connection at the meeting site, Ventura County Computers needs advance notice for special BIOS and odd drivers needed so they can be downloaded and burned to a CD. I hope anyone with this need has already contacted Ventura County Computers. If this goes well, the event will probably occur more times during the year and, I hope, years to come. Remember, it is available to members only. Tell your friends. Maybe

(Continued on page 3)

Board of Directors

President..... Andy Toth.....president@cipcug.org
 Vice Pres. Craig Ladd482-4344....vicepresident@cipcug.org
 Treasurer.....Art Lewis.....treasurer@cipcug.org
 Secretary.....Laura Pacheco.482-4767.....secretary@cipcug.org
 Past President George Lakespastpresident@cipcug.org

Executive Committee

Programs.....Nita Lang.....vicepresident@cipcug.org
 SIG Coordinator...Ralph Duchacek..... sig@cipcug.org
 Membership.....Ken Church.....membership@cipcug.org
 Librarian.....(Open).....librarian@cipcug.org
 Legal Adv..... Michael Van Sickle.....mikesq@justice.com
 Computer Shows....Roland Fleig.....shows@cipcug.org
 Web Page.....Helen Long.....webmaster@cipcug.org

Past Presidents

Walt Yates.....1987/1989
 Lois Evans de Violini.....1989/1991
 Terry Lee.....1991/1993
 Jerry McLoud.....1993/1995
 Robert Provart.....1995/1997
 Toby Scott.....1997-1999
 George Lakes.....1999-2001

The Outer Edge

Editor.....John Weigle
 P.O. Box 6536, Ventura CA 93006
 485-7121 jweigle@vcnet.com
 OS/2 Leader.....Steve Carter
scarter@vcnet.com
 Advertising....Contact the editor

**CIPCUG mailing address:
 P.O.Box 51354, Oxnard, CA
 93031-1354**

The Outer Edge is published monthly by Channel Islands PC Users Group, an independent, non-profit corporation. Contents of *The Outer Edge* copyright 2001 © by Channel Islands PC Users Group.

Permission for reproduction in whole or in part is granted to other computer user groups for internal non-profit use provided credit is given to *The Outer Edge* and the authors of the reproduced material. All other reproduction is prohibited without prior written consent of Channel Islands PC Users Group.

Opinions expressed in this journal are solely those of the authors or contributors, and do not necessarily represent those of Channel Islands PC Users Group, its officers or membership as a whole. The information provided is believed to be correct and useful, however, no warranty, express or implied, is made by Channel Islands PC Users Group, its officers, editorial staff or contributors. This disclaimer extends to all losses, incidental or consequential, resulting from the use or application of the information provided.

Channel Islands PC Users Group does not endorse or recommend any specific hardware or software products, dealers, distributors or manufacturers. All trademarked or registered trademarked names are acknowledged to be the property of their respective owners, and are used for editorial purposes only.

**CIPCUG is a member of APCUG
 The Association of PC Users Groups**

Advertising in The Outer Edge

Advertising is accepted for computer related materials, businesses and services only. Rates are for Camera-Ready copy (clear, clean black and white masters). Typesetting and graphics are available at an additional fee.

SIZE	Cost/Issue
FULL-PAGE (9½"H x 7¼"W).....	\$50.00
HALF-PAGE (4½"H x 7¼"W) or (9½"H x 3½"W).....	\$30.00
THIRD-PAGE (3"H x 7¼" W	
QUARTER-PAGE (4½"H x 3½"W).....	\$20.00
BUSINESS CARD ad.....	\$15.00

Discounts for multiple issues (3, 6, 9 and 12 months) Ad copy deadline is the 10th of the month of publication.

Contact The Outer Edge Advertising Mgr.

**John Weigle at
 (805) 485-7121**

make all checks payable to CIPCUG

Executive Committee Meeting Notes

September 2001 By Laura Pacheco

The Executive Committee tried meeting at Andy Toth's home at 6 p.m., Tuesday, Sept. 4; however, with some of the members not having much time between leaving work and showing up at that time, it has been changed to 6:30 until further notice. Attending the meeting were Andy Toth, Craig Ladd, Art Lewis, Helen Long, Ken Church, Toby Scott, George and Arline Lakes, Roland Fleig, David Minkin, Ron Pinkerton, and Laura Pacheco.

The usual reports on the Financial, Membership, Web, and SIGs were given and discussed. (For more information

on what was discussed, please check out the reports in TOE.)

Our new member for September is Lillian Lopez. Welcome, Lillian, to our humble, but interesting, family.

On the agenda were discussions regarding future presentations and their preparations, assigning a committee to check out the equipment in storage for updating and replacing, and last-minute changes for the September computer shows and SIGs.

Hope everyone enjoyed his or her Labor Day Weekend.

Why join CIPCUG?

Here are just a few of the reasons: Monthly SIGs, a monthly program, a monthly newsletter, a discounted Internet Service Provider, a library of computer books and videos, discounts on a variety of books and software, access to computer help through F1—Your Help Key, friendships with other computer users and the chance to help others with your knowledge.

Coming events: Jeff Levy in October

Programs

The Oct. 6 program will feature KFI radio personality Jeff Levy, the host of the Sunday morning "Jeff Levy on Computers" show, along with the Check Up, Tune Up and Troubleshoot event sponsored by Ventura County Computers.

Jeff's program is a three-hour talk radio show that runs from 9 a.m. to noon. Its format is a combination of Q&A, interviews, and information sharing on the growing power of the PC. Most of the program is devoted to listeners who call in to ask questions about their computers and to solve technical problems. Jeff walks them through do-it-yourself repair steps, giving easy-to-follow instructions every time. There are also interviews with people who have made a difference by using new technology. Past shows have included developers of computer software and hardware, organizations who use the Internet to tell others about community resources, and authors who put the latest advances into book and CD form. His Web site is <www.jefflevy.com>

Other scheduled programs:

Saturday, Nov. 3: Power Quest <www.powerquest.com/office/http://www.powerquest.com/office/>.

ServerMagic 4.0 for NetWare, the newest update to PowerQuest's most successful version of ServerMagic helps you protect your network storage while reducing downtime because of server deployment, hardware and software upgrades, or failure.

Saturday, Dec. 4: We will meet at the James F. Cowan Conference Center, 550 Airport Way, at the Camarillo Airport. This is for the December meeting only, because of other commitments at the Freedom Center. The program will concern the Internet.

Saturday, Jan. 4: Windows XP, the new Microsoft operating system.

SIGs

Special Interest Groups (SIGs) are sponsored by CIPCUG and led by volunteers. There is no charge for members to attend. Signing up for the class is no longer necessary as our classrooms are large enough to accommodate our club's needs.

Most of our SIGs are held at the Gateway Computer store, 1700 Ventura Blvd. in the Oxnard Auto Center

October door prizes

Logitech Quick Cam Express Internet Video Camera
A4 Tech Optical GreatEye two-wheel, four-button mouse

And possibly more

We have two types of door prizes, those given by the presenter of the program and those bought for the raffle. Members get one ticket for the presenter's prize(s). Members and visitors may buy as many tickets as they wish for the raffle at \$1 each or six for \$5.

SIG reminders available by e-mail

To keep members up to date on coming SIGs, Andy Toth has agreed to offer an e-mail reminder service to club members. Sign up and he will automatically send you a reminder about two days before each SIG, indicating the topic, location, and date.

We hope that this service will remind more people about coming SIGs. Check the front page of the CIPCUG Web site in the "Latest Page Revisions" or at the bottom of the SIG INFORMATION page.

Or, if you want to sign up without going to the Web page, send an e-mail to <signinfo@cipcug.org> with the subject line "subscribe" to be placed on the list.

(behind the Red Lobster and Fresh Choice Restaurants). They are held from 6:30 to 8:30 p.m., and we must vacate the premises promptly by 8:30 p.m. Please note that we can not load any software into the Gateway computers.

Some SIGs are held at Ventura County Computers, 2175 Goodyear Ave. No. 117, Ventura. While the Gateway facility is larger, if we need to install software on computers, Toby is perfectly willing to let us use his VCC location and computer.

Be sure to check the location for each SIG. If no moderator is listed, the SIG is not officially scheduled.

Check the Web page before you attend to make sure there will be a moderator.

Here's the SIG schedule for the last of September and

(Continued on page 4)

More about: Command.com

(Continued from page 1)

you just want the System Tray cleaned out.

It has been difficult to find a volunteer to replace Arthur Jensen as librarian.

Two persons have stepped forward but can only do it

part-time. This is being seriously considered. There will be some logistical problems. I believe they can be overcome. Due to the "Tune UP" activity, there will be no library at the October meeting.

Lastly, Tammy and Krista will be our break hostesses. I

Q&A: How computer clinic will work

Q&A host, Toby Scott

Transcribed by Laura Pacheco

Toby Scott answers questions unless otherwise stated.

Toby: Let me first mention the computer clinic, which will be held in the back at our next meeting. We won't have the library so we can use those tables. We have our staff and friends coming in from Ventura County Computers. Bring in your CPU box, plug it into our workstation and we will do whatever it needs to have done — within reason. The cost is \$10 per computer; however, you will receive a \$10 gift certificate to spend on anything in our shop or toward further repairs or even on hardware. Of that, \$5 will go to the club and since we are paying the people to come in the other \$5 will go toward paying them. We will run that from about 8:45 until just before 11, so we hope everyone will have a chance to get their computer taken care of. One of the problems that we have is that we do not have an Internet connection here, and if we do not have the driver on disk, we are not going to be able to do your driver updates. We will try to have drivers of the common stuff on CD, but that doesn't necessarily mean we will. We will do the best we can. If worse comes to worst, we will give you the address of the driver site so you can do it at home. We will do the best we can. If you e-mail tech@cipcug.org with the exact model of your peripheral, we will try to have the current drivers with us when we come. Particularly if you have a computer that you have had for a while and it's starting to run slower and slower and you don't really know why, bring it in and we can tune it up pretty quickly.

Q: Are you going to do laptops too?

A: We will do laptops, but we won't take them apart here. It's too easy to lose small screws and stuff you cannot replace.

We will diagnose, do software settings and that sort of thing, but it's too risky in this kind of environment to start taking laptops apart.

Q: I want to understand this — so, this is not a general diagnosis of the function of the computer; it's more updating and making it more efficient and faster.

A: We will fix relatively minor software problems. We are not going to spend four hours on one software problem. We will do diagnosis, tune-ups, tidying up, clean ups, show you how to do stuff if there is something you really need to do and you can't figure out how to do it. Not necessarily huge lessons but specific, fairly narrow focus "how do you do this?" Whatever it is you need to do to make it more efficient.

Something that will take a fairly reasonable amount of time, taking into account the time frame, others needing help, and what you would expect for \$10.

Q: To put it in perspective, what would this service cost in your shop?

A: The minimum charge in our shop is \$30.

Come in a little early — first come, first served — put them on the tables in the back behind the sign-up, etc. tables. Be sure to stick your name on it someplace. You may think you know it, but I guarantee that if we get 30 computers in here, you won't know yours anymore.

Q: Is this a one-time thing or a continual feature?

A: It depends on how successful is it. How do we like it? How disruptive it is to the rest of the meeting. Do the club/VCC like it? I envision that if we like it we may do it twice a year or something like that. If it's hugely successful, once a quarter would be good. We will see.

Q: Just need a comment on File Maker Pro and Access.

A: I haven't used File Maker Pro recently — it's still a flat file database, isn't it?

Mike: Actually, it is relational. I've only used it on the Mac, but I assume it's the same program.

Toby: It's fully relational? It does many-to-many joins?

Mike: That's the part of it that I don't understand about that or Access. Some parts of Access I don't understand, I also don't understand about File Maker Pro, which is why I think they are the same.

Toby: You know I've been in this club way too long; it's starting to make sense.

Mike: The only thing I do know about it is that I export from the File Maker Pro to a Works database, and I can

(Continued on page 6)

More on programs and SIG schedule ...

(Continued from page 3)

for October:

Thursday, Sept. 20: Ventura County Computers, Toby Scott, E-mail customization, rules, filters and identities.

Tuesday, Sept. 25: Ventura County Computers: Andy Toth, Excel, everything from budgeting to games and beyond.

Monday, Oct. 8: Gateway, Michael Shalkey on Free

Web Sites using Yahoo!

Monday Oct. 15: Gateway, Gracia Marks works her magic with MS Works

Tuesday, Oct. 16: Ventura County Computers, David Minken will dust off the APCUG disk and show you how to download files from the disk or from the Web sites of the many vendors available.

Tuesday, Oct. 30: Ventura County Computers, Andy



Adobe® Photoshop® Elements

Easily create
professional-quality digital
images for print and the Web

Adobe Photoshop Elements software offers unique features designed specifically for amateur photographers, hobbyists, and business users who want an easy-to-use yet powerful digital imaging solution. State-of-the-art image-editing tools free you to explore your creativity while mastering the elements of digital imaging. Work with photos taken with digital or traditional cameras and prepare your images for print, e-mail, or posting on the Web.

Adobe® Photoshop® Elements
Special Offer for \$69.
See Details at www.adobe.com/offer/74300

Adobe, the Adobe logo, Clearly Adobe Imaging, the Clearly Adobe Imaging logo, and Photoshop are either registered trademarks or trademarks of Adobe Systems Incorporated in the United States and/or other countries.
© 2001 Adobe Systems Incorporated. All rights reserved. Printed in the USA. Produced by Marketing Programs, INC 2720 1/01



More Q&A: File Maker Pro has supporters

(Continued from page 4)

walk back to another machine and use it on Works. So I know I can export/import.

Toby: I haven't used that program in ages and am not able to talk about it right now. I can tell you one huge advantage to Access and that is that there are tool boxes, add-ons things, lots and lots of people around that know how to use if you get into trouble, and it is a pretty well-known and understood database program. There are things I really don't like. It's not the favorite database program that I have ever used. But, if I were starting a business application and I were a little uncertain about my ability to deliver it, that's probably what I would use to build it, simply because of the help I can get if I'm in trouble.

Member: I stand on the opposite side of the table because I love File Maker Pro and don't care for Access. It's just a lot more user-friendly. I would be glad to talk to anyone who wanted to know a little more about it. The latest one is fully relational. They started out not that way, but it is today. It's fully cross compatible across Macs and PCs. You can access the same file from either machine on the Intranet.

Q: I get some e-mails from some friends every now and then that appear to be in HTML format. I cannot figure out how to open that. What should I do?

A: Internet Explorer opens HTML, if it's really HTML. We talked about this at the Internet pre-meeting SIG, but let me repeat it.

If you get an attachment, and it says it's HTML, it can be disguised. It can be "something something dot HTML dot vbs (visual basic script). It will show up on your screen as HTML because most of the time the visual basic extension is hidden by your Outlook Express or other mail program you have. If you open that and the script is a virus script, you have a virus. So the safe way to do that is to take it, save to disk, run your virus checker on it first. If you look at it in Windows Explorer it will probably have all your extensions shown. It will show you the true extension even if e-mail does not, and you can make a better decision about whether to open or not. If it's a dot HTML or dot HTM and you double click on it in Windows Explorer, it will come up, assuming that you can bring it up, in Internet Explorer.

Q: Let me correct myself, it's not attached. It's in the body of the e-mail.

A: If you go into TOOLS, OPTIONS, in Outlook Express, you can change it so you can see the HTML as an HTML.

Member: I just wanted to say that in Outlook Express it is the rich text format that will display the HTML.

Toby: Sorry, you are right. Thank you. Rich text format is what they call it and not HTML.

Q: I am receiving some e-mail where the body is miss-

ing. I see a header but no body.

A: Ask them to resend it. What's the client?

Member: Netscape. It's coming from multiple sources.

Toby: (After looking around for help) I don't think anyone really knows other than telling them to resend it.

Q: When my computer crashes and I click CTL/ALT/DEL, this little box comes up with all these little boxes that are running. What I want to know is, how do I find out what those acronyms mean? Which programs are which?

A: You go to the icons for the programs that you use regularly, right mouse click, go down to properties and it will tell you the correct name of the program that is running. You are going to have to make your own index of them so you can figure out what's running and what isn't. Some of the stuff that is running in the background you won't be able to get to. Msimm or whatever it is, that happens to be the Module in Outlook Express to go online to get your e-mail. That's one that frequently locks up.

Q: With Win98SE: While initializing device PTVCD: Windows protection error you need to restart your computer. Restart yields same message. I can boot in safe mode; what can be done for a fix?

A: Go into Safe Mode, go to START, RUN, type msconfig and in msconfig, you can enable or disable certain things for diagnostic purposes when you boot up. My guess on this: I would try disabling at boot up the loading of your Win.ini and System.ini files and give that a try. If that doesn't work, go back into safe mode, go ahead and check those, go to startup group and uncheck everything that doesn't start up in Windows. Look for the file name. If you can find anything that starts out with PT, disable that in the startup and give that a try. Look in your autoexec and your configsys file and see if you find anything that looks remotely like that to disable. My best guess is that it is going to be in the system or the win.ini file.

Anytime you have a boot up error in Windows and you can boot to safe mode but you cannot boot to regular mode, you can go into msconfig and selectively load things. Selectively means that if you leave them unchecked it doesn't load. That will allow you to begin narrowing down the element in your computer that is giving you trouble. That's a general methodology — more specifics are going to take a lot longer to explain and put the rest of you to sleep. At some point, you might want to take it to someone and have him or her fix it.

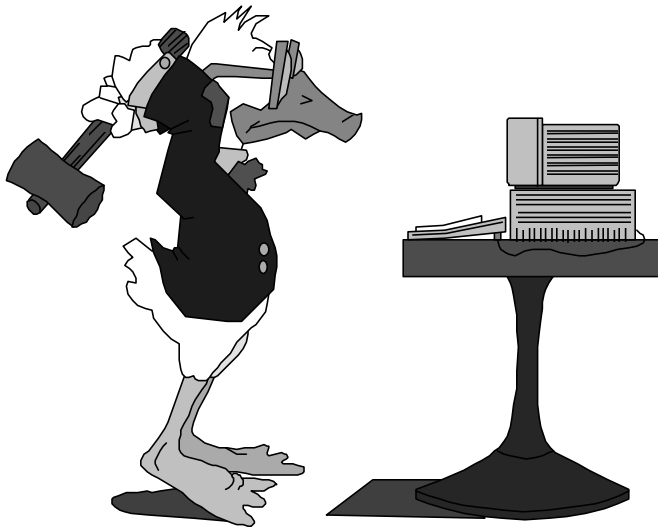
Member: I've had a similar situation. My motherboard crashed and after I got it back with a new motherboard, after I put my hard drive in, it just wouldn't boot. I went into misconfig, unchecked everything so it would load nothing and it still blue-screened on me. There was a hardware conflict.

(Continued on page 8)

Is your computer making you
crazy and confused?

Is it too ...

Complex? Complicated?



Does it seem
like your best
tool to fix it
would be a
hammer?

Check Up, Tune Up and Troubleshoot

Instead of searching for your tool box, pack up your CPU, put your name on it and bring it to the October meeting.

Technicians from Ventura County Computers will test it and either fix it or recommend what you should do.

The cost is \$10, half of which will go to CIPCUG and half of which will go to Ventura County Computers.

In addition, you'll get a \$10 gift certificate to use for any Ventura County Computers product or service — making the ultimate cost of the tune-up and check-up FREE.

This service is available
only to CIPCUG members.

More Q&A: CompuServe includes IE

(Continued from page 6)

Toby: You will have to look in CMOS. This one is actually a file error that's PTVCD and so generally speaking it's a file load error. You are talking about a blue screen, which is not a file control — it's before you get to loading of files, generally. When you start to boot early and you blue-screen, you either have a hardware failure or you have a CMOS conflict, and you need to into the setup, if you can get there. If you get through what they call the POST (the stuff at the beginning that cycles your memory, checks your hard drive and it tells you your serial and parallel ports, etc.), and you are starting to load Windows and you lock up at that point, generally speaking, it's not a hardware failure, it's some kind of conflict in the drivers.

Q: I reformatted and I have not put in IE or Netscape. I have CompuServe so I bring it up to get my e-mail and I can type in for any Web pages I want, type in search, have favorites so what does IE do for me that I can't do now?

A: Nothing, since you ARE using IE. The browser in CompuServe is IE.

Q: So I don't have to download and go through all that to get it?

A: Because of all the viruses out there, I would certainly go out to the Windows Update and update my IE with all of the security settings. I would not install IE6.0. There are some issues with IE6.0, and I am not recommending anybody install that program right now. There is nothing functionally wrong with it, but there are a lot of things that will cause you some problems. If you do install it, you will have to manually install JAVA, QuickTime ActiveX, and drivers — there are a few things that are missing out of the package. If you do have IE5 point something, I do advise that you upgrade to IE5.5 Service Pack 2. There are several security enhancements in Service Pack 2 over Service Pack 1. It's worth the effort, which is a long download by modem.

Most installations of Windows, when you go START, and you look up at the top of the start menu; one of the first items on the list will be WINDOWS UPDATE. Hardly anybody knows it's there; but if you click on it, it will take a look at everything in your computer, and it will figure out what you don't have installed that you maybe should. It will tell you the first ones are the critical updates — ALWAYS install the critical updates. Those are the anti-virus things, security breaches, the things the hackers are using to get in with. If MS found some kind of hacker vulnerability, go fix it, particularly if you are on cable or DSL. It's not as critical on dial up, although it still is important.

The other stuff you don't really have to do; it's a lot of it's the pretty stuff. The Service Pack rolls up all the critical updates, I think.

Q: Something happened to me while I was surfing the Internet that really freaked me out. I was surfing for books

for college courses and all of a sudden, after I closed up my IE, on my task bar was this little box with a little animal in it — a frog or turtle or something. I had never downloaded this program and after I ran my virus scan, I opened it up and it said something about having your information for application and surveys, etc. This thing downloaded on my computer without me knowing it, and I didn't like it. Gator.com is the name.

A: You can put an icon on the desktop from an HTML Web page. It's not considered kind or nice, but you can. Stay away from Gator.

Q: Why would it download without my permission or knowledge?

A: The thing is, technically, it didn't download. What it did was create a shortcut. Your computer created a shortcut. The distinction is that if it tells your computer to create a shortcut, it's your computer that creates it and there is no way that a virus can get in there, unless your computer is already virus-infected. There is no virus they can send you that way. It's a perfectly safe and clean way of putting a shortcut on your desktop, to tell your computer to build a shortcut to this particular Web site. However, not everybody wants a shortcut to Gator and to be so presumptuous that when you visit its Web site that it would put one on our desktop is considerably beyond the pale. Not only would I not go to the Gator site, but if you know what site put the Gator on there, I would send an e-mail to the webmaster telling them you are no longer going to visit or patronize their Web site because you consider this an unreasonable imposition on your resources. Your desktop should be your own and shouldn't be someone else's playground. I would post that message!

Q: I have an Epson 880 printer and it works great. However, when I go to view the electronic documentation, I get an error message that says "you must have IE — must have a browser." This is Win ME with IE5.5 — what's happening? (The file is an HTML file.)

A: I suspect that what is happening is that the file association got lost. Look at the Epson documentation and see what the extension is.

Then go into Windows Explorer and go to TOOLS, FILE TYPES, and highlight the extension and click change to have it point to your browser. If you don't find the extension, you can add one. Just enter the extension and point the program (in this case, it's probably C:\Program Files\Internet Explorer\iexplore.exe) to it. You can also do that with any other program. If you go into the file types you can add an association and you can assign XYZ so that it is always opened in Notepad. If you are exchanging XYZ with somebody and that's the extension you use or if you have your own little database program or something like that and you want to have your own extension, just say XYZ is a-

(Continued on page 9)

More Q&A: REAL wants to take over

(Continued from page 8)

ways opened with this program. You can either type in the path to the program or use the browse function and find it.

Q: Member asked Toby and audience if there was someone here who could answer questions regarding genealogy programs, etc. A one-on-one connection was made for after the Q&A.

Q: On that Gator.com issue, isn't that similar to all the Real junk? When you open something in REAL, not only does it put the icon on your toolbar, but it also puts it in your startup menu. Then all of a sudden you get three or four other things trying to load themselves into your start menu that you have no desire to have.

A: Yes. Real is REALLY aggressive when it comes to taking over your computer. It also, if we go into the file extensions we were looking at before, changes what program opens a whole bunch of extensions so that they are opened in REAL instead of Windows Media Player or other program. That can mess you up a little bit, too. It changes by default and it changes your download manager to the REAL download manager without your permission.

I always like championing the smaller companies against MS, but when they get so aggressive that they take over things, then I lose my sympathy for them. I don't have

a lot of sympathy for REAL anymore! I'm REAL unsympathetic. (You knew that was coming!)

Q: Question on local area networks: With two Win98 computers, one with CD-RW drive, printer and scanner on it, can I access/share them with the other one?

A: Sure you can. It's very, very easy. Things you need: two network cards, if you are connecting just two computers together — a crossover cable. It tends to be a specialty item; be careful with that. If you have more than two computers or they connect to the Internet, you'll need a four-port hub, plugging your computers into it with a straight cable. If you buy cables, you almost always buy a straight cable not a crossover. Don't mix these two up — be careful.

Anyway, you connect the two computers together. When you right mouse click on Network Neighborhood or My Network Places or whatever it's called in your version, go down to properties, click on TCP/IP for your network adapter not for your dial up adapter, add Client for Microsoft Networks and File and Print if they aren't already installed. When you have installed them and rebooted, go back in to Network Properties and click on "I want to share my files and folders." Close the Network box (you may have to reboot). Then anything you want to share, go to Windows Explorer by right-mouse clicking on it, say,

(Continued on page 10)

Don't buy another computer... Until you read these facts about All-City Computers

Available & Helpful Sales Staff. When you come to our store to look at computers, you will easily find a staff of very helpful, courteous and knowledgeable sales people. Our sales people are not commissioned, not pushy and are full-time professionals in the computer industry. We help you on your level of understanding. We can explain in plain English the basics of computers and provide you with expert technical understanding of your concerns. We show you the important points of computer purchasing in a friendly, helpful manner.

The Very Best Quality Computers. Our computers are different than most because they provide you with an industry-standard design. This means we build them so that they can be upgraded easily by you or any computer technician, not just our company. Many companies' computers are made to be serviced only by them, which reduces your convenience and increases your costs. Additionally, our purchasing department is extremely committed to providing you with the most reliable computer available by hand-picking the very best components in the industry. We start with the most reliable motherboard and process or -Intel® only.

The Best After-The-Sale Services. The best service we provide you is the best built computer that is reliable, stable and performs like it is supposed to. This keeps you away from needing service. However, if you need any hardware service on your computer, we take care of it immediately, usually while you wait. Our 3 year warranty covers parts and labor from hardware related issues AND our customers know they can always call us even when it's a software problem. We go the extra mile to answer questions and help you out of troubles. And you can always rely on us for genuine help with any computer questions.



All-City.Computers
The Best Built PC's!

1775 Daily Drive, Suite F
In the Camarillo Plaza, off Carmen Drive
Camarillo, CA 93010

MON-FRI 9-6
Saturday 10-4

All-City Computers has been serving our customers in Ventura County for 15 years. We are the largest Intel® Products Dealer in the Tri-County area and one of the top in Southern California.

www.all-city.com
805-388-8311

Scanner works for slides, negatives

By John Weigle

<jweigle@vcnet.com>

A scanner made for nothing but slides and negatives was the focus of our September meeting. Jerry Crocker, who provides the digital pictures for the Web page and The Outer Edge, demonstrated the PrimeFilm 1800 Series.

He's still learning how to use the scanner and all its features, he said, but so far "it's really easy to use," he said.

The series includes three scanners: PrimeFilm Scanner 1800I, PrimeFilm Scanner 1800u and PF Silver Scanner, with list prices ranging from \$169 for the first two to \$299 for the third one). All three work on both Macintosh and IBM-compatible computers with USB capabilities. Neither the product sheets nor the program made clear exactly what the differences are among the three, although Jerry said the expensive scanner comes with more expensive software.

The basic software is the Presto! PhotoAlbum, Presto! PageManager V4.00, Presto! Mr. Photo V1.20 and Presto! ImageFolio V4.1 LE. The PF 1800 Silver comes with SilverFast Ai, which, the product sheet says, gives beginners and professionals "the possibility to manually vary the image at any point." It also comes with an online densitometer.

If you already have photo software, such as PaintShop Pro, the scanner works with it, Jerry said.

As you'd expect, the user can adjust for overexposure, underexposure, excessive darkness and red-eye, not to mention adding special effects.

The product sheets say the scanner's advanced optics, combined with the detail of 35mm film, provide "the best possible scan quality" – 36-bit images are captured at 4.2 mega-pixels, "providing a level of detail that cannot even be reached by a digital camera costing 4 times as much."

The scanner also allows users to enlarge images to 20 cm by 13 cm while maintaining the 1:1 300 dpi resolution sufficient for offset printing. Prints of 30 cm by 20 cm can be printed at 200 dpi on a desktop color printer, "more than enough for a good quality, clear picture," the product sheet says.

The scanners show a preliminary image that can be cropped before the scan is saved, allowing editing before the file is saved to the hard drive, Jerry pointed out.

"You can have hours and hours of fun if you have a box of slides," he added, because once you get the photos on your hard drive, you can make CDs of them to share with friends and relatives or send them by e-mail.

Users don't have to cut individual negatives from strips of film, Jerry said, because the scanner is equipped to handle the strips.

The PacificImage Web site is at <www.scanace.com>.

More Q&A : Ethernet

(Continued from page 9)

"share as," give it a name like CD and you are done. OK, you have CD on Computer 1 and Computer 2 wants to get to the CD, they access it as backslash, backslash Computer 1 backslash CD. You can in Windows Explorer go to TOOLS, MAP NETWORK DRIVE, and you can use a drive letter that is not being used and call your CD on your other computer your X drive. Once you do that, forever more, whenever you want to access the CD on the other computer, you just access the X drive, just as you would access the C or D drive.

Q: I purchased two cards with Ethernet on it and have a choice of cabling on the back. Is there a preference to one style over another or does it make a difference as to how far you going with it?

A: If you have a network card and you have a choice of cabling on the back, you have the wrong network card. The old, old, old — more than 7 years old — network cards will give you a choice of either Ethernet or so-called Thinnet, which is coaxial cable. The problem with that is if you have that choice you don't have the choice of fast Ethernet. If you get a network card that is called a 10/100 network card, not a regular Ethernet card, you can exchange data 10 times as fast, but you will use the Ethernet cabling, which

What the Windows key can do

Here are some of the shortcuts that the Windows key at the lower left of your keyboard will let you do:

- Windows key alone — Open Start menu
- Windows + D — Minimize all open windows. Hit Windows + D again to restore the windows.
- Windows + E — Open Windows Explorer
- Windows + F — Find a file or folder
- Windows + Ctrl + F — Find a computer
- Windows + M — Minimize all open windows except those with open modal windows
- Windows + Shift + M — Undo minimize all
- Windows + R — Display Run dialog box
- Windows + F1 — Display Windows help
- Windows + Break — Display System Properties dialog box
- Windows + Spacebar — Scroll down one page (in some applications)
- Windows + Tab — Cycle through Taskbar buttons.

— From Unauthorized Guide, Windows 98 Second

Web page: Why some pages are slow

By Helen Long

<helen@cipcug.org>

Can we talk?

This is going to be a how-to column this time. I have had several people ask me to look at their Web site and tell them why it takes so long for the page to emerge.

Chances are that they just got a digital camera and have been having lots of fun taking pictures, and now they want to put them on a Web site to share with families.

I don't know anything about digital cameras, but from everything I have seen, these pictures come out 8½-by-11 inches in size, or thereabout. They use some sort of "Lower Slobovian" language to get these huge pictures on the Web in some sort of scrunched up fashion, and sometimes they look awful.

Now, the fact of the matter is that these pictures are still 8½-by-11 inches in size. It is doubtful that even your family will wait long enough for the pictures to materialize at those sizes.

Take your pictures into a graphics editor, either Paint Shop Pro or Photo Adobe, or even View and reduce them in size.

If you have a glorious sunset or fabulous scenic picture,

it probably will display just as well as a 5-by-7-inches, and take a whole lot less time to download. If you have a picture of a single person, they will portray more beautifully at 1¼ by 1¾ inches. If you have three or four people in the picture, go to 2½ by 3 inches. The lingo that it



takes to display the smaller images at smaller but at the same time, full size, is much simpler than that required of a barn-sized picture reduced to 1½ inches square. Not only will they take less time to download, but they will also look 100 percent better. Try it! You will like it!

If you keep your pictures at 150-300 DPI, you can still enlarge them and they will retain their original beauty (in case you want to frame them).

Have a look at any of the CIPCUG picture sites — and there are a lot of them — and you will see how very simple it is to arrange three in a row with text to match. It is in understandable English and not Lower Slobovian. Thanks



Ventura County Computers

www.vccomputers.com

Microsoft Certified Professional

(805) 289-3960

2175 Goodyear Ave. #117 Ventura 93003

- AMD 1.33 GHz CPU
- Socket A 266 MHz FSB
- Main board
- 256MB RAM
- 32MB 3D Video
- 52X CD-ROM
- 12x8x32 CDRW
- PCI Fax/Modem
- Network Card
- 20GB Hard Drive
- Viewsonic E75 17" Monitor
- Windows ME
- Internet Keyboard
- Microsoft Optical Mouse
- Antec Mid-Tower Case w/250w PS
- 3 Piece Subwoofer speaker system

1333MHz

Roxy Says

"That's Too Fast for me"



\$1,299.00

Toby's Special

This month we're featuring Viewsonic monitors with our systems. The E75 model has a .25 Dot Pitch and is an excellent complement to our high-end systems. Don't miss this great quality for a low price.

Ask for
Toby or Rick
□
Serving
Ventura County
for over
8 Years



Membership report: Is it time to renew?

By Ken Church

<membership@cipcug.org>

Welcome to the following new member:

Lillian Lopez

Total membership: 327

RENEWAL INFORMATION

The renewal dues are

\$25 for single membership,

\$30 for two or more family membership.

Please send renewal payments to:

CIPCUG MEMBERSHIP

P.O. BOX 51354

OXNARD, CA 93031-1354

Or bring your payment to the November meeting.

August 2001 renewals past due, Final Notice:

Mbr #	Last Name	First Name	Pd to Date
0934	Jensen	Arthur	200108
0888	Johnson	Karen L.	200108
1031	Morrison	Marilyn	200108
0229	Scott	Toby	200108
0892	Scott	Ilona	200108
0723	Smith	Bernadine	200108
0936	Teitzell	Leonard	200108
0158	Volpi	Ralph	200108
0988	Weber	Caroline	200108
0988A	Weber	Don	200108

Mbr #	Last Name	First Name	Pd to Date
1035	Brooks	Richard	200109
0499	Chakires	Andy	200109
0894	Duchacek	Ralph	200109
0249	Greenway	Frank	200109
0373	Houle	Robert	200109
1034	Huen	Albert	200109
1033	Huen	Darryl	200109
1037	Lerner	Robert	200109
0990	Mehr	Steve	200109

Mbr #	Last Name	First Name	Pd to Date
0716	Nichols	John	200109
0372	Pizza	Tony	200109
0989	Shobe	Ivan	200109
1036	Smith	Howard	200109
0609	Traber	O.W.	200109
0733	Wall	Sinclair	200109

September 2001 renewals past due:

Mbr #	Last Name	First Name	Pd to Date
0734	Buchanan	John	200110
0034	Campbell	Gordon	200110
0941	Clark	Reagan L.	200110
1039	Davison, Jr.	Curtis	200110
0385	Forder	John / Carolyn	200110
0037S	Hosford	Victor	200110
0993	Ladd	Craig	200110
0510	McKeefery	Genevieve	200110
0942	Mickey	Barbara A.	200110
0772	Reich	Estelle	200110
0901S	Shelton	Charles	200110
1040	Shrage	Anne	200110
0262	Strecker	Mike	200110
0994	Zaas	Robert	200110

Why join a computer club? What's in it for me?

A difficult question to answer? Not really. For me, I joined CIPCUG originally for two reasons.

First, to help a good friend get to the monthly meetings. He was unable to drive anymore. So I offered to chauffeur him to and from the meetings.

Second, and just as important, I found where I stayed at the meetings waiting for my friend that I too, would learn something. OK, slowly at first. So, when I joined the club it was for the education.

Of course, just to mention a few of the other great benefits, I received when joining are the SIGs. Talk about a low-cost education with no pressure for a grade. At the monthly meetings I can learn about new software and hardware before purchasing it at a discount. Then there are the raffles. Sure I like to win free stuff. I also can buy a few door prize tickets from time to time to have a second chance to win some great prizes.

Last, but not least, there are the club members. I enjoy trading computer knowledge, experiences, and friendships. We have a very gifted membership. Thank you for your fellowship.



BEGINNERS CLASS

September 2001

Mike Strecker roostermike.roosterm@gte.net

More tips for beginners....

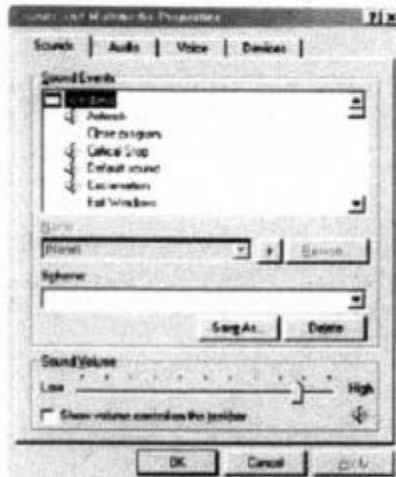
Changing Mouse Pointers

If you've ever wanted to change what your mouse pointer looks like, with Windows you have several options already built in. Open the Mouse Properties box by clicking the start button, point to Settings, click Control Panel. When the Control Panel opens double click the Mouse Icon, then click the Pointers tab. To change all your pointers at one time, click the box under Scheme. To change one pointer at a time, click the pointer type in the large window, then click Browse, and then double-click the file name of the pointer you want to use.

Changing Mouse Properties

Did you know that your mouse probably has a lot of adjustments you can make? Click your Start button, point to Settings, click Control Panel, and double-click the mouse icon. From there you may be able to: Adjust the speed of your double click. Adjust the speed the cursor moves across screen. Set the pointer so when it hits the edge of the screen it comes out on the other side. Set it so your cursor leaves trails when you move it. You may have more options than this, or less; but you'll never know until you check.

Changing Your Computer Sounds



You know your computer makes sounds for different events such as opening a program, receiving mail, and many others. Did you know you can choose the sounds you want it to make? When you're tired of the same old sounds, assign new ones!

Click the Start button, point to Settings, click Control Panel. When the control panel opens, double-click Sounds.

The events that can have sounds assigned are listed there (as per graphic on the left). Select an event, such as "Close Program." Events currently having sounds assigned to them will have a little speaker icon by them. The sound currently assigned to that event will be listed in the Name drop-down menu when you click it once to highlight it. To hear the sound assigned, click the Play button next to the Preview box. If an event doesn't have a sound assigned to it, you can assign one yourself.

To assign a new sound or change an existing assignment, click the event once to highlight it, and choose a sound from the

Name drop-down menu (Windows comes with a few sound schemes), or click Browse to search for other sound files (WAV format) on your hard drive. When you select a sound, click the Play button to confirm it's one you want to use for a while, then click Apply to save the new setting.

What does the word Kernel mean?

The Kernel is the heart of an operating system, it is the foundation software inside every computer. It monitors clock cycles (processor cycles) and how much time each program gets. The Kernel starts programs and monitors their status, it also handles resources like memory sharing among programs.

How fast is your Internet connection?

By Jim Thornton

<jthorn@gte.net>

This article describes the two common methods of determining your Internet speeds. Part one explains bits, kilobits, megabits and bytes, while part two introduces the speed in terms of milliseconds. Also, the second part provides a method of identifying which geographical portion of your current Internet connection is slowing you down.

When you subscribe to DSL or cable Internet service, you will most likely become concerned about what speeds you are obtaining, as the monthly cost for these services, including your ISP (Internet Service Provider), is double over a dial-up telephone modem accessed ISP. The greatest speed that I can obtain from my telephone modem is 28.8 Kbps (28.8 thousand bits per second), but with my cable modem my average speed is 950 Kbps or over 30 times faster.

How do you know what your speed is?

There are several good Web sites to test your speed. Three popular sites are <www.dslreports.com>, <www.computingcentral.msn.com/internet/speedtest.asp> and <www.2wire.com/services/bwn.html>. These sites may be used to test telephone, DSL, or cable modem service.

Why do you get different results from these speed test sites?

A lot of factors come into play, ranging from path congestion between your computer and the test server, quantity of users online at any one time, the number of modem requests for retransmissions because of a bad packet, poor condition of your telephone or cable TV wiring, etc. The best bet is to always use the same single test site to determine your average speed.

What do these measurements mean?

First of all, Kbps stands for 1,000 bits per second and Mbps, 1 million. Sometimes you may see DSL or cable speeds advertised as 1.5 Mbps, meaning 1 1/2 million bits per second.

What is a bit?

A bit stands for binary digit (bi from binary and the t from digit) and is the smallest unit of measurement. Whenever you see a small letter b, it stands for bit while a large letter B stands for a byte. Bits can convey only the most basic information — on or off or one or zero — but a group of eight bits make up a byte, and that byte will represent an individual character (letter, digit, etc.).

Are there other ways of determining your transfer speeds?

Yes, a year or two ago, I wrote an article on Net.Medic, a freeware program that would display your Internet speed on your monitor. But, alas, a larger company brought that company, and they decided not to enhance the program for Windows Me nor continue to support the product. I have

found another freeware program called NetStat Live (NSL), and it displays your download and upload speeds in real time. The program has seven programmable fields or panes, including the name of your computer, its IP (Internet Protocol) address, and network interface, and similar information is provided for the user-assignable remote server; the current, average, and maximum download and upload speeds and their totals in bps and/or Kbps; plus other information on the average ping time, number of hops; your computer's CPU load, etc. I have displaying on my screen only the download speed pane, as it doesn't take up too much space. Another nice feature of NSL is that if you have the program automatically load during startup, its icon will appear in the System Tray (the lower right-hand corner of your screen) and the icon looks like a chevron (triangle) and changes colors. If the icon is green, it means that your computer has received or sent data within the last 60 seconds; if it is yellow, there has been no network activity for the past 60 to 120 seconds; and if it is red, there has been no activity in more than 120 seconds. If the left portion of the icon turns white, your computer is sending data, and if the right portion is white, then it's receiving. The icon continues to display its colors even in the minimized mode as well. The 257K program is available from <www.analogx.com/contents/download/network/nsl.htm>.

What should be considered as acceptable speeds?

The general rule-of-thumb is 90 percent of the stated speed should be considered as acceptable. Thus any dial-up telephone modem should be reaching speeds between 48 and 53 Kbps. The latter figure is the maximum speed limited by federal rules — not the advertised 56 Kbps. My maximum speed is 28.8 Kbps or about 54 percent of the maximum. My slower speed is caused by the long distance between my home and the nearest telephone company-switching center — over three miles away. Mileage will proportionally slow down your Internet speed with dial-up telephone modems and DSL modems. Cable speeds are advertised as 1.5 Mbps, and the highest speed that I ever reached was over 1.6 Mbps on the Fourth of July weekend. However, my average cable speed is 950 Kbps or 63 percent of the advertised speed, and as the number of users within my neighborhood increases, my cable speeds will slow down until the cable company adds another node. Each node is designed to serve up to 400 customers. Thus the overall 90 percent figure sounds quite optimistic, and a more realistic figure for acceptable speeds may be 50 percent or higher for any Internet service connection.

This part of the article introduces the measurement of Internet speed in terms of milliseconds and provides a method of identifying which section of your current Internet

(Continued on page 15)

More on connection speed

(Continued from page 14)

connection is slowing you down.

Isn't there a more basic way to measure speed?

One of the more original ways is to use ping (packet Internet group — p from packet, in from Internet, and the g from group). Ping is a machine language code used by several operating systems today, including DOS (Windows), Unix, etc. Ping measures the time it takes to go from your computer to the designated server and back again — like a radar or sonar system. For example, let's ping CIPCUG's Web site and see the results. First double-click on Start, Accessories, and the MS-DOS Prompt. At the blinking cursor, type "ping cipcug.org," and enter. Don't type the quote symbols. The response will provide the numeric IP address of the CIPCUG Web site as 207.178.213.229 and that it sent four test messages each being 32 bytes long. The round-trip time ranged from 13 to 28 ms (milliseconds or one-thousandth of a second), with an average of 17 ms, and no test messages or packets were lost along the way. Also provided is the TTL (Time-To-Live) settings of 32 — the standard default settings for Windows 95 is 32, and later versions of Windows use a higher figure. TTL is simply a counter and every time that the test transmission goes through an intermediate server; one is subtracted from the total. If the TTL reaches zero, then an error message (Request timed out) is returned. This means that the server is either unavailable or that the time for the reply has exceeded its allocation. Now, let's try another site -- <tu cows.com>. Its IP address is 216.40.34.35, and the speed of four test messages ranged from 96 to 110 ms, with the average being 99. Of course, the lower time is the faster connection! Don't forget to type "exit" and enter to go from the DOS mode back into Windows. Did you know that you can type the IP address directly on the address line of your browser instead of the full http://www address and go directly to the requested site?

Is there a way to identify the slowest part of my Internet activity?

There is another command — tracert (trace route — trace, and the rt from route) and it will provide the speed of each leg between your computer and the designated server. Double-click on Start, Accessories, and the MS-DOS Prompt. At the blinking cursor, type "tracert cipcug.org," and enter. Just as with the ping command, tracert has identified the numeric IP address for the CIPCUG Web site but sent only a single test message. It identified that there were 14 hops or legs involved, meaning that the request has to go through 13 intermediate servers to reach the CIPCUG Web site. Along the way, tracert identified each server by name and numeric IP address and recorded the send, receive, and average time in milliseconds. My request originated in Camarillo and went through Los Angeles and Ontario to reach Ventura, where the CIPCUG server is b-

cated. There were four legs whose speed was less than 10 ms — a good speed — two were 13, and eight were 14. This test is intended more for the identification of individual legs as no total is provided. Three of the slowest legs were in Los Angeles, where the Verizon Internet backbone provider (BBNPlanet) is located, and the remaining four were in the Westlake and Ventura area (ISWest). You will frequently see these results posted on the verizononline.cablemodem newsgroup. Again, lower times are better. There are several freeware and shareware programs available from the Internet that will greatly enhanced the basic features of ping and tracert. Some of the enhancements include the maintaining of the past history of sites that you have tested, while others display the information in an easier to read format. The popular Web site of tu cows <www.tucows.com> lists 95 ping-enhancing programs available. Don't try to use the ping or tracert command from your

(Continued on page 16)

www.marketpro.com

COMPUTER Shows & Sales

Upcoming Oxnard/Ventura Shows

2001

Sun. Sept. 16 - Oxnard
Sat. Sept. 29 - Ventura
Sun. Oct. 21 - Oxnard (tentative)
Sat. Nov. 3 - Ventura

Oxnard - Community Center
800 Hobson Way, Hwy. 101, Exit Vineyard Ave. West, left on 1st Street to 9th & Hobson.

Ventura - Seaside Park
No. 101 to California st.
So. 101 to Ventura Ave.

Seaside Park's new \$5 parking fee has been lower to \$3 for MarketPro Computer Shows.

Hours 10-5pm

Upcoming Southern Shows
Note: * Sunday

- * Sept. 2 - Fresno
Fresno Fairgrounds (Adm. \$7)
- Sept. 8 - Bakersfield (Adm. \$7)
Kern County Fairgrounds
- * Sept. 9 - San Diego
Scottish Rite Center (Adm. \$5)
- * Sept. 16 - Oxnard
Community Center
- Sept. 29 - Ventura
Seaside Park (Adm. \$5)
- * Oct. 7 - San Diego
Scottish Rite Center (Adm. \$5)

Sorry, no coupons accepted with New Low Admission of \$5

For Info: (415) 456-6730
www.marketpro.com

NEW Hardware • Software • Peripherals • CDROMs And MUCH MORE!

www.marketpro.com
Computer Show Schedule
24 Hrs. a day!

SIGN-UP NOW for Automatic E-Mail Notification of Your Local Shows

Opinion: Just how intuitive are computers?

By John Weigle

[<jweigle@vcnet.com>](mailto:jweigle@vcnet.com)

I've spent the last few weeks at the Ventura County Star — my full-time job — being trained in Quark Express, the program the paper uses to design the news and feature portions of the daily newspaper. Although learning to design on the Mac is not my first choice of things I'd like to do on the job, this article isn't about that but rather about the difficulties that a new user can face when learning new software.

Many software designers claim their programs are intuitive — this seems to be a favorite phrase of people who prefer Macs — but the more I use computers, the more convinced I am that there is no such thing as an intuitive program. That is, no program works like every user thinks it should, despite what the developers, sales people and advertising writers tell us.

Remember when you first used DOS, or Windows 3.1 or Windows 95 or 98 or whatever operating system you started with? Was it intuitive? That is, did you know what to click and how to click it as soon as you sat down at the computer, or did you have to get some training or stumble around on your own, struggling through poorly written manuals or on-screen help to figure out what to do after you hit the power switch?

Certainly, the second, third, fourth and twentieth programs you learned were easier to learn than the first one, but that's not because they were intuitive. It's because you had already learned the basics of the operating system and some of the standards that had been established for it.

For example, I'm writing this on Microsoft Word, and as I glance at the tool bar, I see labels for pulldown menus

called File, Edit, View, Insert, Format, Tools, Tables, Windows and Help. Because I have become familiar with Word and other Windows software, I know what menu to click on to find many specific tasks. I know that the keyboard command of Ctrl-A will mark my entire document, Ctrl-C will copy what's marked to the clipboard and Ctrl-V will paste from the clipboard to a new document in a different program or to another spot in the same document. But none of that comes from intuition.

I have used the old DOS publishing program, Express Publisher, and the Windows program Microsoft Publisher, to put out several newsletters, including The Outer Edge.

I foolishly assumed that my knowledge of Publisher might help with Quark Express, but, if it did, it also created as much confusion as it did help. Both programs require the user to draw text boxes for text and picture boxes for pictures. But Publisher makes me go to the Insert menu, find the text I want to insert and click on its name. Quark, on the other hand, makes me find the story and drag it onto the text box.

To insert a picture in Publisher, I click on the picture box and use the resulting dialog box and menus to search for the picture and click Open on the one I want to insert. In Quark, I use Apple-E to open the find-picture box, click on the one I want and it pops into the box.

Is one of these more logical than the other? I doubt it. I find Publisher easier to use because I learned it first (and because it doesn't have all the bells and whistles of Quark Express that I will probably never fully grasp). But had I learned Quark first, I would probably wonder why Publisher did things so differently. As for bells and whistles, Publisher — and every other program on my computer — has hundreds, if not thousands, of bells and whistles that I will never use and don't even know exist. It's those additional bells and whistles, after all — and the fact that most manufacturers stop supporting older programs after some period of time — that software developers use to persuade us to upgrade to new versions every year or so.

It would be interesting to be able to remember our own experiences as beginners or to watch what new users do when they sit down in front of a computer for the first

More on speed

(Continued from page 15)

Run window for as soon as the test is completed, the window displaying the results will promptly close, preventing you from reading the information.

How do I convert ms into Kbps?

Throughout this article, we discussed the measurement of speed in two different ways — one by using Kbps and the other using milliseconds. Actually, when we were measuring speed in terms of Kbps, we were measuring the speed of the transmission rate between two modems — very similar to the car's driving speed — its instantaneous speed. While other measurement, in milliseconds, was the data transfer rate — similar to how long it takes you to drive to the store, not how fast you were going. So while it would seem that we could easily convert milliseconds into



**THE
COPY
COURT**

2351 Vineyard Ave., Oxnard, CA 93030
(805) 988-0075 • FAX (805) 988-1188



doing business differently,
- digitally -
from color to black & white.
everything you need.
all in one place.
www.copycourt.com
email: vince@copycourt.com

We're always in your neighborhood. FREE pick-up & delivery!



F1—Your Help Key

(Revised Dec. 11, 2000)

CIPCUG INTERNET SERVICE

(For general Internet and Communications programs, see Communications/Internet)

Jerry Crocker, 486-0308, 6-10 p.m.
normsplumb@aol.com,
Roland Fleig, 983-8707, mornings
schwable@cipcug.org,
George & Arline Lakes, 983-2969, 2-10 p.m.
thelakes@cipcug.org,
Helen Long 642-6521
helen@cipcug.org
David D. Minkin, 484-2974, 5-12 p.m., weekends
dddave@compuserve.com,
Claude Whelchel, 482-4017, 8-12 a.m.
claudew@cipcug.org

COMMUNICATIONS/INTERNET (GENERAL)

World Wide Web DM, TS
Compuserve. DM
Note Tab Pro. TS
Procomm Plus DM, WB

DATABASES

dBASE. GM
MS Access LP

DOS RP

EDUCATIONAL / CHILDREN TZ

E-MAIL

Lotus:CCMail. DM
Outlook TS
Outlook Express TS

FINANCIAL

Quicken JD

GENEALOGY TL

HARDWARE, UPGRADING JM, JD

HTML TS
NETWORKS TS
OS/2 LZ
SPREADSHEETS
Lotus 1-2-3 GM
Microsoft Excel DM, LP
Quattro Pro DM
UTILITY PROGRAMS
Norton Utilities DM, JD
PCAnywhere DM
PC Tools . WB
XTree Gold. DM
WORD PROCESSING
Microsoft Word BW, DM, MR
WordPerfect. DM, GM, JD

WINDOWS

Windows 3.1 DM, JM
Windows 98, 95 DM, JM
Windows 2000 TS
Windows NT TS

Initials	Name	(805)
BW	Bart Wood	482-4993 (e)
DM	David Minkin d: voice mail	484-2974 (e); 339- 1729
GM	Gracia Marks	484-7572 (e)
JD	John Daily	650-0029 (b)
JM	Jerry McCloud	(818) 889-6176 (e)
LP	Laura Pacheco	L5Enigma@Earthlink.net
LZ	Len Zakas	388-8452 (b)
MR	Marvin Reeber	984-1974 (b)
RP	Robert Provart	498-8477 (b)
TL	Terry Lee	tdlee28@hotmail.com
TS	Toby Scott tech@cipcug.org	289-3960 (d)
TZ	Trish Zakas	388-8452 (b)
WB	Dr. William Burger	653-6889 (e)

Phone: (d) = days; (e) = evenings; (b) = both

SERVICE • REPAIR • MAINTENANCE

DAILY COMPUTER SERVICES

• MOBILE COMPUTER REPAIR

JOHN A. DAILY

Daily Computer Services
4572 Telephone Road, #904
Ventura, California 93003

(805) 650-0029
FAX (805) 650-0712



Are you tired of looking at all the ads on your free Internet or free E-mail service? Are you looking for a reliable ISP at a reasonable price? How does \$15 per month plus \$15 processing fee sound to you? You will also have the advantage of a special DOMAIN name; however, it may not be a name of your own choosing. It is the name of the club that provides this service to its members; CIPCUG.

To sign up, contact one of the club's techies in the F1 — YOUR HELP KEY (page 17) under CIPCUG INTERNET SERVICE. Call one of them you may know or one in your area and they will be glad to provide you with the details necessary for signing up. Checks should be made payable to CIPCUG and forwarded to Treasurer, c/o CIPCUG, P. O. Box 51354, Oxnard CA 93031. Don't forget to include the \$15 set-up fee in your first sign-up check. You may make payments in three-month, six-month or annual increments. (Renewals can also be mailed to Treasurer; just be sure to mention the dates that your check is to cover).

We have had over a year of flawless service to our club members. There is no program to install, you will be making use of the programs that are already on your computer. It is a simple matter to talk you through the set-up as it is today — much easier than it was in the past. If you are the least bit timid about setting up your computer for our service, a club member will be glad to come to your house and make the necessary set up arrangements. How many ISPs do you know who will do this? Our agreement will also give you a 5 MB Web page allowance.

If you have any questions, please don't hesitate to call any of the Tech Support team and they will either answer the questions or find out the answers for you.

Bits and Bytes

VBPCUG to feature Mike Strecker

For those of you who are Mike Strecker fans (he does the Beginners SIGs), he will be giving one of his general Q/A Windows programs at Ventura Beginners PC Users Group in Ventura on Saturday Oct. 13.

The Ventura Beginners PC Users Group meets the second Saturday of the month at Buenaventura Mobile Home Estates Clubhouse at 11405 Darling Road, Ventura, CA. from 10 a.m. to Noon. Visitors are always welcome.

Newsletter for beginners

Publication of the newsletter "The PC Beginner" began with the August 2001 issue. The monthly newsletter will be sold by subscription only with the delivery by Internet e-mail only.

The PC Beginner offers training for the new user in a step by step format which takes the "newbie" from the beginning to the end, one step at a time. New users are given information about how to use the programs on their computers, which are often not user-friendly, in a way that makes it seem simple to accomplish even a difficult or complex task.

Written from a senior's perspective, using lots of graphics as well as numbered tasks and arrows pointing to the right spot, the users can be sure that they are learning to do the job correctly.

A sample copy of the August issue may be downloaded by going to the PC Beginner Web site <<http://store.yahoo.com/pcbeginner2001-store/>>.

Newsletter author Earl Brooten says "new users, senior or otherwise, are not dummies or complete idiots, they are merely ordinary people of average or above average intelligence who are uninformed. The spirit shown by their interest in learning should be met by the authors of how-to books on software use with increased attention to detail, but this is been sadly lacking in most publications."

More information may be obtained from Earl Brooten at <brooten@starstream.net>

Aladdin releases GoBar for Palm devices

Aladdin has released GoBar 2.5 for Palm devices. The new version provides the ability to file, delete or beam applications with just a drag and drop. For more information on GoBar 2.5, visit <<http://www.aladdinsys.com/gobar/>>.

GoBar is only \$9.95, but the User Group Store offers special pricing on all of Aladdin's software titles. CIPCUG members can go to <<http://www.aladdinsys.com/support/usergroups/ugvalid.html>> and use the UG code: PUG 0201.

Aladdin calls GoBar an easy to use, popular and sophisticated utility application for Palm OS-based handheld computers. GoBar gives users unprecedented levels of handheld customization and data utilization while giving

Editor's corner: Sorry about that ...

One of the problems of having a one-person operation on a publication is that there is no second pair of eyes to check the work. When the same person writes many articles and edits and lays out all of them, it's almost impossible to avoid some mistakes. Still, I fear that the double program blunder in last month's issue might beat anything that either Bob de Violini or Stan Ranson ever did. While the story on coming programs was right, both the headline on it and the program listing on the back cover listed Jeff Levy as September's program.

I know exactly why I made the mistake. Command.com concentrated so much on what we'd be doing in October that I fell into an October/Jeff Levy mindset, even though I knew better. And with no one else seeing the pages before they went to the printer, the errors went right through the process, on to the page and out to the membership. (At The Star, where I work, at least two people, and often more, read every story, and we still let stupid mistakes slip by. At The Outer Edge, I'm the only one, aside from the authors, who looks at anything before it gets in print, and that's doubly dangerous when I've written the story, too.)

I'd like to be able to blame the mistake on some frustrating health problems I had last month, but the mistakes were made long before the pain started. My doctor originally diagnosed my problem as kidney stones, but X-rays showed nothing, so he switched to antibiotics for a kidney infection. As I write this on Sept. 8, everything seems to have cleared up except for a cold — and I think the only relationship between the two is lowered resistance caused by the infection.

My thanks to all of you who learned about the problem when I missed the TOE folding party and expressed your concerns at the regular meeting. Your kind thoughts are appreciated.

* * *

On another matter, our computer show volunteers say that the F1 — Your Help Key feature in TOE is a good selling point to attract new members. But if it's going to continue to be a selling point, we need volunteers for some more widely used programs. For instance, we have volunteers to answer questions on PC Tools and Xtree Gold, which, for all practical purposes, are seldom used anymore, but no one for Eudora, a popular e-mail program; Microsoft Money; Microsoft Publisher; or Microsoft FrontPage (I know lots of experienced Web masters and ISPs don't like it, but it is used a lot).

If you're experienced enough with a program or two to feel comfortable helping fellow members, please let me know so we can expand the list. Note that you can specify the time of day you're willing to help or if you want only e-mail questions.

If you're already a volunteer, please check your listing to be sure it's accurate. We haven't had any chances since

Dec. 11, 2000, and I find it hard to believe no one on the list has changed a phone number or e-mail address in that time.

I thank you, as do all the members who might one day benefit from your help.

* * *

Like everyone else who uses a computer, I have my opinions about the government's suit against Microsoft and the Justice Department's recent decision not to pursue the breakup of the company, but I'd be interested to know yours.

Do you think the suit should have been filed in the first place? Do you think the decision to drop it was correct? Do you think breaking up Microsoft would have been good or bad for the computer industry and computer users? What, if any, penalties do you think the Justice Department and/or state attorneys general should try to get now?

Treasurer's report

August 2001
By Art Lewis

<treasurer@cipcug.org>

Category Description	8-1 through 8-31 2001
Income	
Advertising	\$ 50.00
ISP Income	360.00
New Members	120.00
Raffle	161.00
Renewals	775.00
Software Sales	10.00
TOTAL INCOME	1,476.00
EXPENSES	
Coffee-Doughnuts	-78.50
ISP Expense	388.00
Misc. Expense	104.33
Rent Paid	75.00
Software Purchase	14.00
Storage	45.00
TOE	491.35
TOTAL EXPENSES	1,039.18
TOTAL INCOME – EXPENSES	436.82
Unrestricted Funds	\$6,542.03
Restricted Funds	1,309.00

The Outer Edge

Channel Islands PC Users Group
P.O.Box 51354
Oxnard, CA. 93031

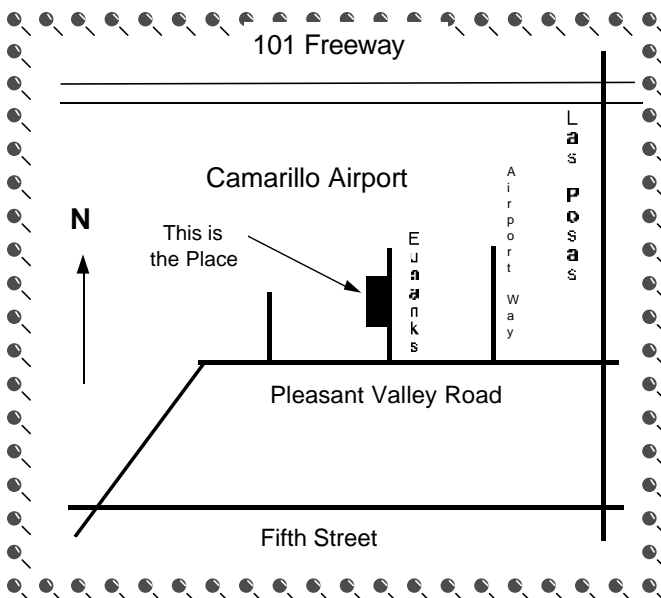
NON-PROFIT
U.S.POSTAGE
PAID
OXNARD. CA
PERMIT NO. 1785

DATED MATERIAL
Please Do Not Delay

DUES REMINDER

If the number after your name is 0110, your membership dues are payable in October 2001

OCTOBER 2001 MEETING OF CHANNEL ISLANDS PC USERS GROUP



Saturday morning, Oct. 6,
at
Freedom Center, Camarillo Airport
515 Eubanks (at Pleasant Valley Rd.)
Camarillo, California

Meeting Schedule:

- 0845-0930 Beginners SIG
- 0855-0930 Internet SIG
- 0845-1045 Check up, Tune Up and Troubleshoot
- 0930-0945 Business Meeting
- 0945-1030 Q&A Session
- 1030-1055 Break - Please contribute requested amounts for coffee & doughnuts
- 1100-1200 Program: Jeff Levy